

# Dramatically reduce truss installation costs. Eliminate some altogether!

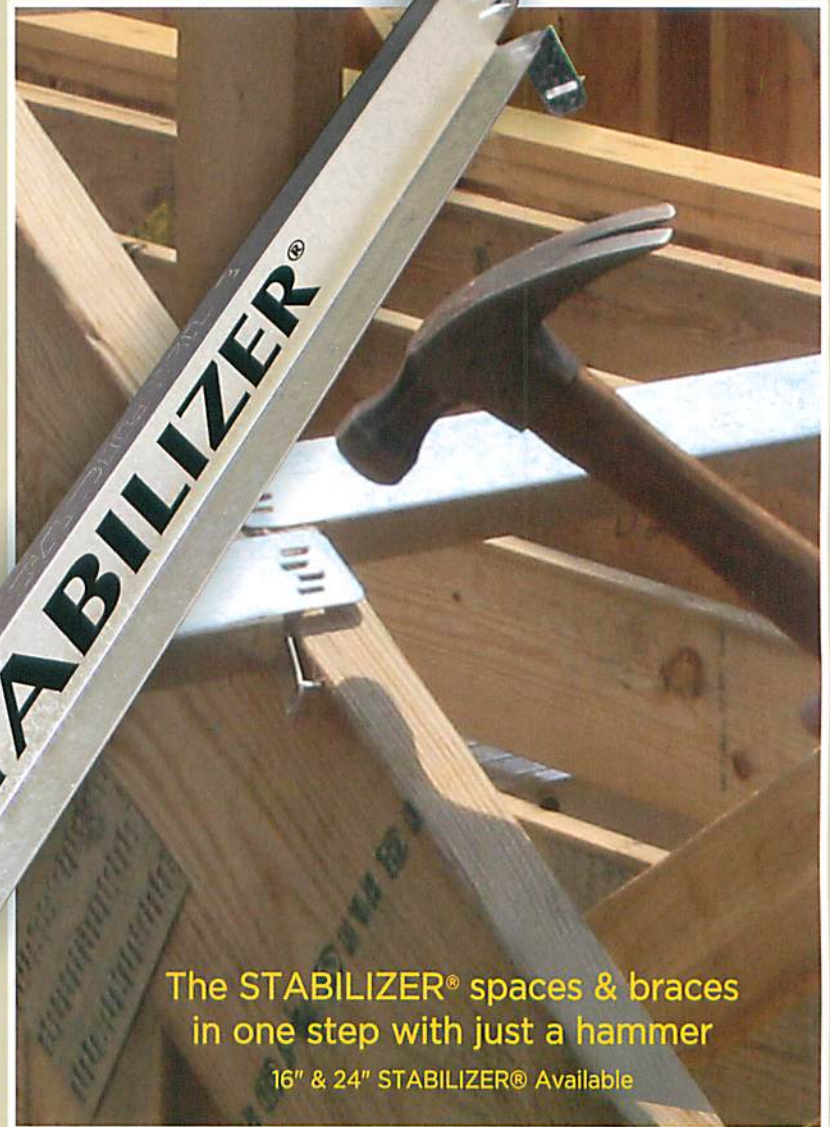
## Reduce Costs of ...

- Truss installation by ..... 45%
- Crane time & expense by ..... 35%
- Temporary bracing lumber  
by over ..... 67%
- Time spent hoisting up  
temporary bracing by over ..... 67%  
(Stabilizer bracing clips on trusses for the crane ride up)

## Eliminate Altogether ...

- Time spent cutting temporary  
bracing lumber
- Time spent de-nailing (or disposing  
of) temporary bracing lumber
- Time spent tearing down  
temporary lateral bracing  
(Stabilizer bracing stays in place—just sheath over)

All you need  
is the right  
tool.



The STABILIZER® spaces & braces  
in one step with just a hammer

16" & 24" STABILIZER® Available

**STABILIZER®**  
The right truss-setting tool

**MiTek**  
MiTek®  
POWER TO PERFORM.™

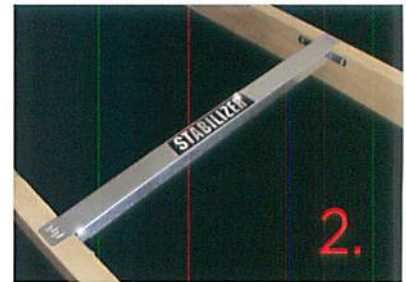
# STABILIZER®

The right tool can make the difficult so easy.

16" & 24" STABILIZER® Available



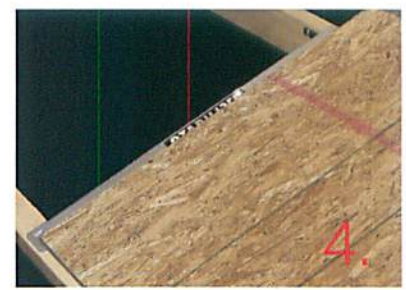
1. Clip Stabilizer® on for the crane ride up



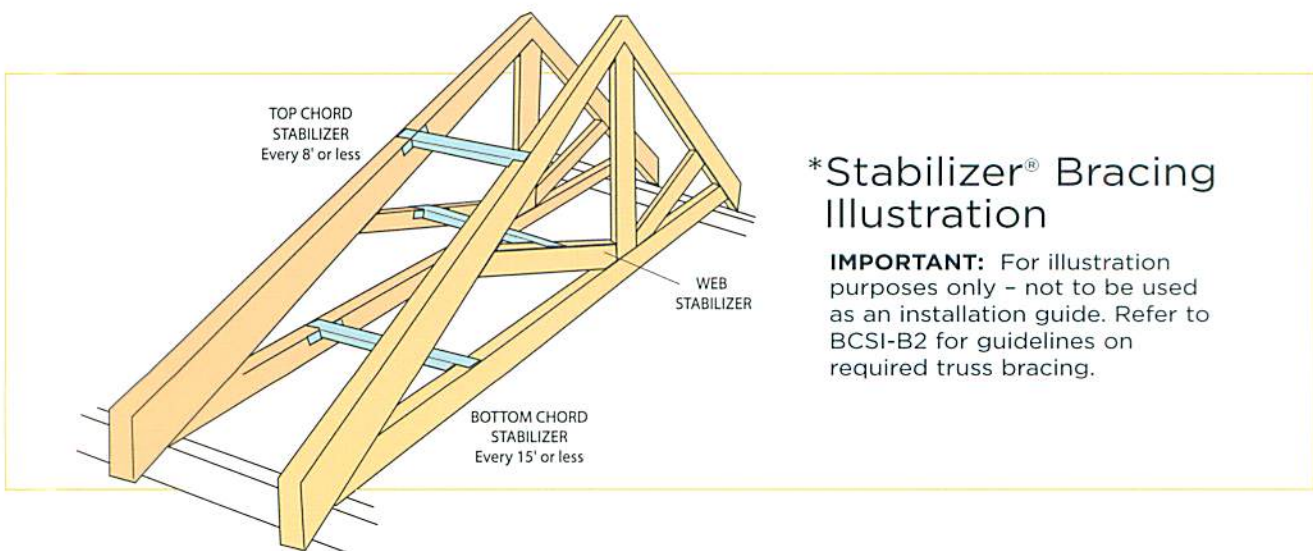
2. Position between chords ... and truss is spaced accurately



3. Set teeth and truss is braced\*



4. Sheath over - no tear-down



## \*Stabilizer® Bracing Illustration

**IMPORTANT:** For illustration purposes only - not to be used as an installation guide. Refer to BCSI-B2 for guidelines on required truss bracing.

**STABILIZER®**  
The right truss-setting tool



**MiTek®**  
**MiTek®**  
POWER TO PERFORM.™